

Relatório do aço

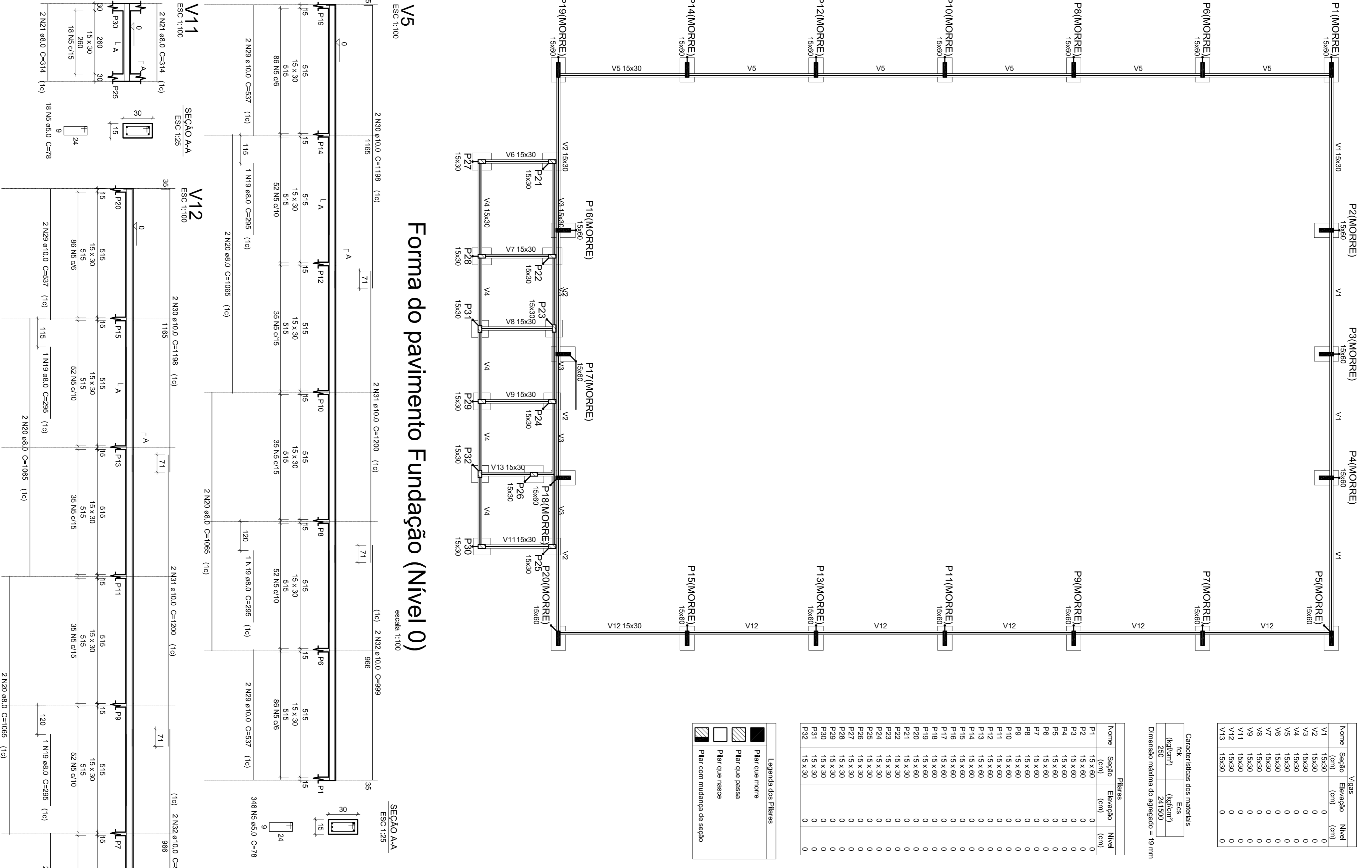
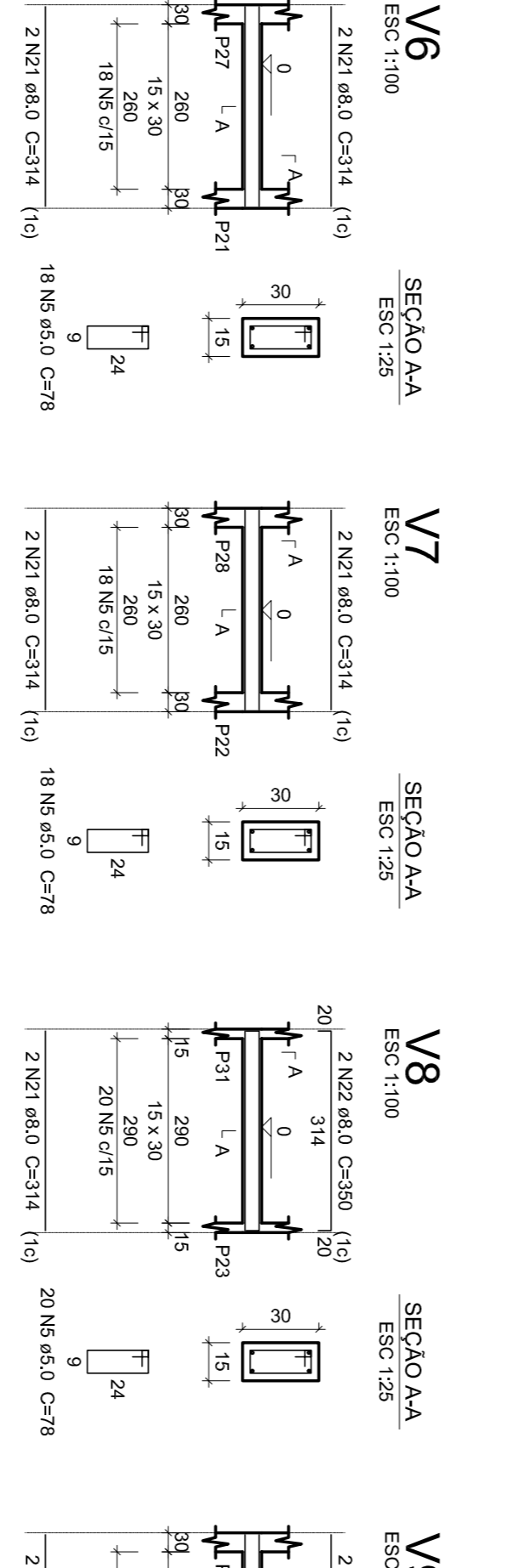
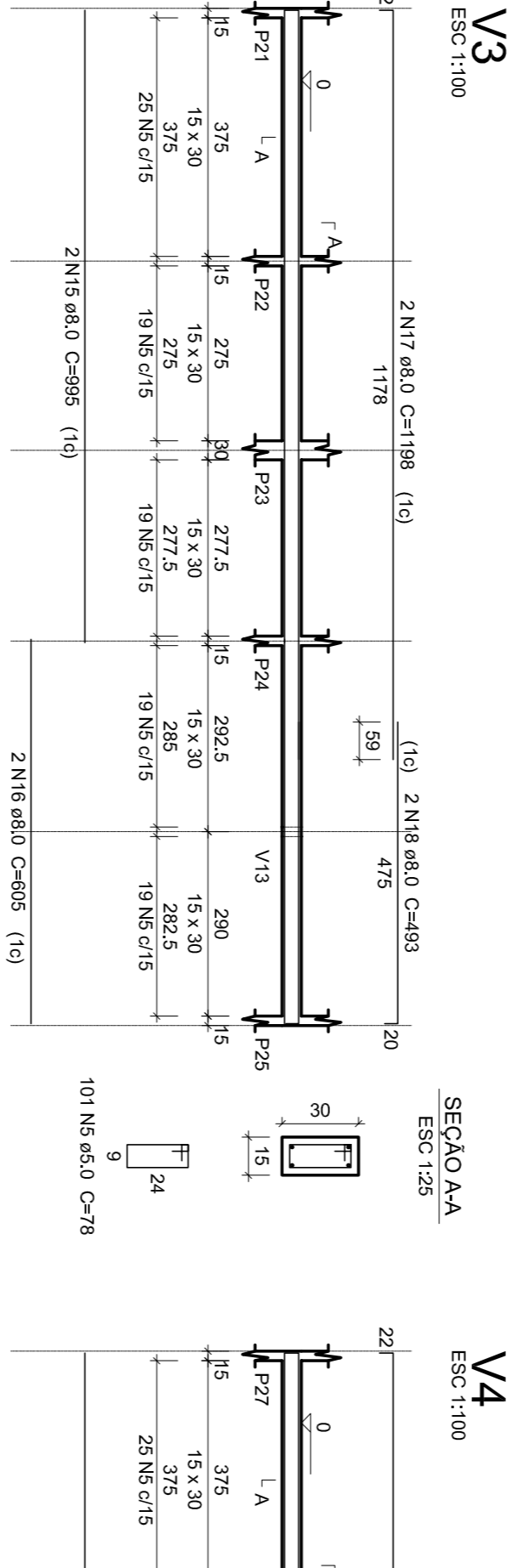
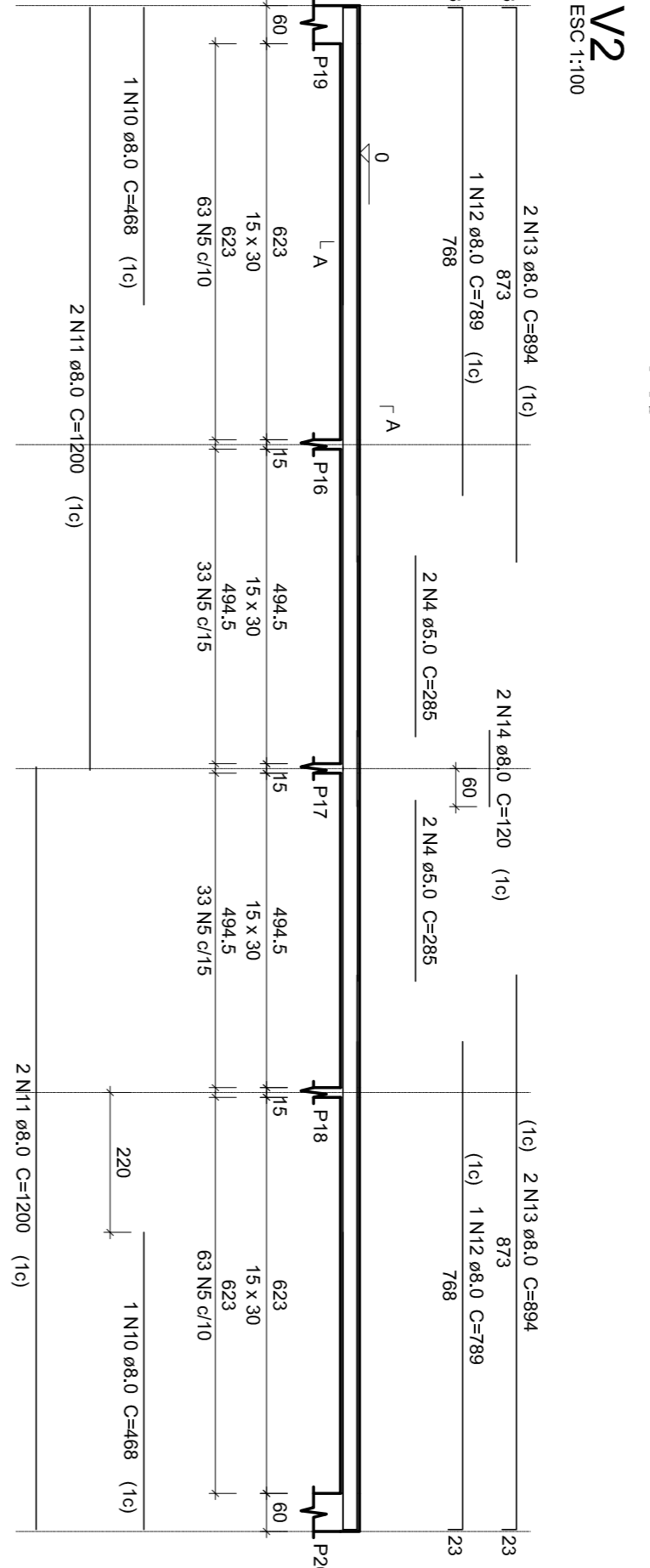
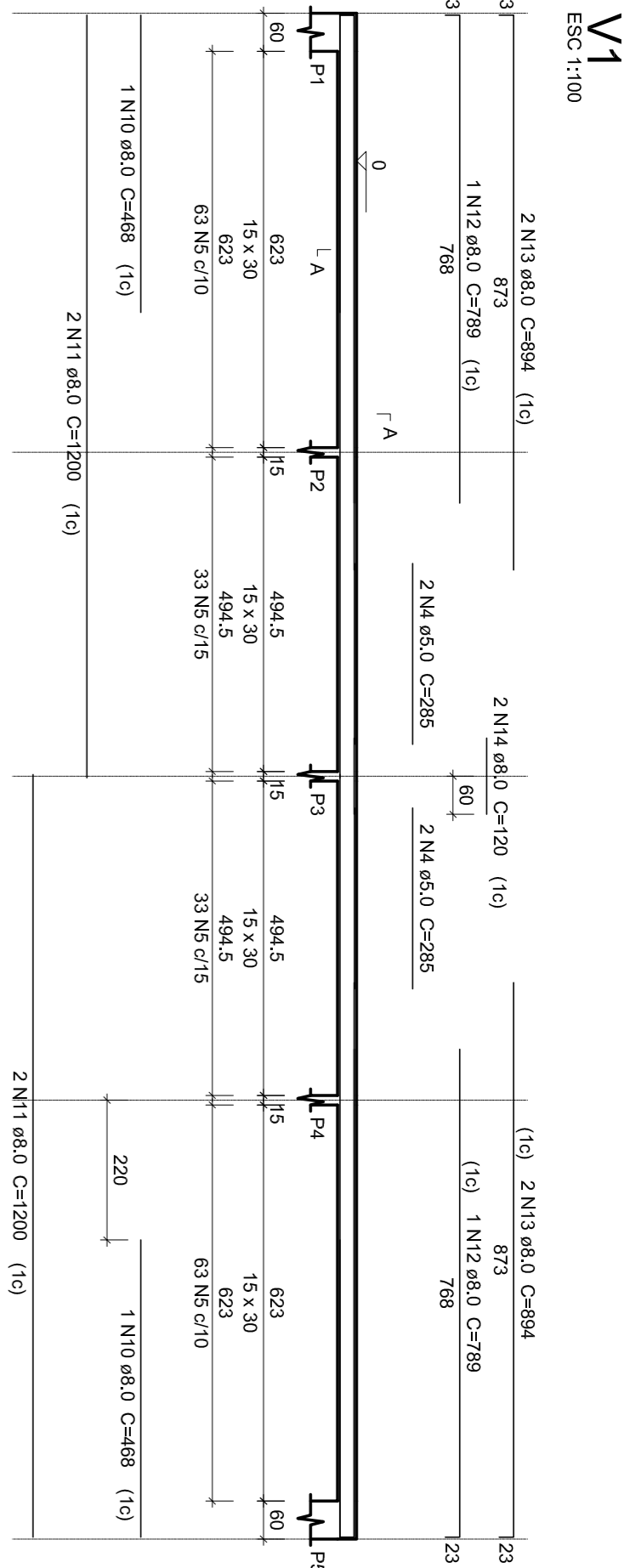
20x51	S21	V2x23
V4	V5	V6
V7	V8	V9
V11	V12	V13

ACO	N	DIAM (mm)	QUANT	CLIMT	C.TOTAL (cm)
C60	1	5,0	180	126	22890
C60	2	5,0	21	378	3780
C60	3	5,0	6	45	450
C60	4	5,0	8	285	2280
C60	5	5,0	1380	78	108420
C60	6	6,3	240	80	19200
C60	8	6,3	157	90	14130
C60	9	6,3	157	90	14130
C60	10	8,0	40	100	4000
C60	11	8,0	4	468	1872
C60	12	8,0	6	1200	3150
C60	13	8,0	4	884	7152
C60	14	8,0	4	120	480
C60	15	8,0	4	995	3980
C60	16	8,0	4	1198	4792
C60	17	8,0	4	1198	4792
C60	18	8,0	4	493	1972
C60	19	8,0	4	295	1180
C60	20	8,0	8	312	5652
C60	21	8,0	21	350	700
C60	22	8,0	2	330	660
C60	23	8,0	2	158	316
C60	24	8,0	1	158	316
C60	25	8,0	1	358	716
C60	26	8,0	2	358	716
C60	27	10,0	56	VAR	VAR
C60	28	10,0	56	VAR	VAR
C60	29	10,0	4	1198	4792
C60	30	10,0	4	1200	4800
C60	31	10,0	4	1200	4800
C60	32	10,0	4	999	3996

Resumo do aço

ACO	DIAM (mm)	C.TOTAL (mm)	FESO +10%
C60	5,0	111,3	145,7
C60	8,0	531,8	230,8
C60	10,0	394,8	267,7
C60	5,0	144,9	244,6
FESO TOTAL (kg)			
C60	644,2		
C60	244,6		

Volume de concreto (C25) = 14,24 m³
Área de forma = 187,78 m²




Nome	Seção	Elevação	Nível
P1	15x60	0	0
P2	15x60	0	0
P3	15x60	0	0
P4	15x60	0	0
P5	15x60	0	0
P6	15x60	0	0
P7	15x60	0	0
P8	15x60	0	0
P9	15x60	0	0
P10	15x60	0	0
P11	15x60	0	0
P12	15x60	0	0
P13	15x60	0	0
P14	15x60	0	0
P15	15x60	0	0
P16	15x60	0	0
P17	15x60	0	0
P18	15x60	0	0
P19	15x60	0	0
P20	15x60	0	0
P21	15x60	0	0
P22	15x60	0	0
P23	15x60	0	0
P24	15x60	0	0
P25	15x60	0	0
P26	15x60	0	0
P27	15x60	0	0
P28	15x60	0	0
P29	15x60	0	0
P30	15x60	0	0
P31	15x60	0	0
P32	15x60	0	0

Características dos materiais
 (mm) (kg) (m³) (m³)
 Dimensão máxima do agregado = 19 mm

Legenda das Pilares

■	Pilar que inverte
▨	Pilar que passa
□	Pilar que nasce
▩	Pilar com mudança de seção



PREFEITURA MUNICIPAL
São João da Ponte

PROJETO ESTRUTURAL DA FUNDAÇÃO DA QUADRA NO DISTRITO DE SANTO ANTONIO DA BOA VISTA

MUNICÍPIO – UF: SÃO JOÃO DA PONTE – MG

PROPRIETÁRIO: MUNICÍPIO DE SÃO JOÃO DA PONTE

ENDEREÇO: DISTRITO DE SANTO ANTONIO DA BOA VISTA

PROPRIETÁRIO/PREFEITURA DE SÃO JOÃO DA PONTE

ENGENHEIRO CIVIL AUSSON GUSMÃO CORDEIRO CREA: 167.936/D

ESCALA: EST

FRANCA 02/04